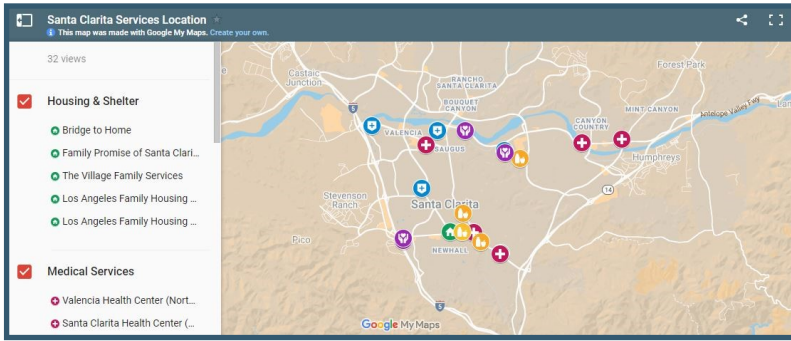


Service Map



To help with transportation and directions, please visit our interactive map in the SantaClaritaHomelessAction.com "Services Tab".



City of Santa Clarita
23920 W. Valencia Blvd.
Suite 140
Santa Clarita, CA 91355

Main: (661) 286-4076
Hours of Operation: Monday through Friday
8:00 a.m. to 5:00 p.m.

SANTA CLARITA
COMMUNITY TASK FORCE
ON HOMELESSNESS

PREVENTION SERVICES RESOURCE GUIDE

Child Care Resource Center

State and Federally Funded Child Development Services

20001 Prairie Street

Chatsworth, CA 91311

Office Phone: (818) 717-1000

Accessible via Antelope Valley Line to Metro 734 to 243

250 Grand Cypress Avenue

Palmdale, CA 93551

Office Phone: (661) 789-1200

Accessible via Antelope Valley Line to Palmdale Transportation Center Route 1 North

Pathways Los Angeles

Child Care for Low-Income Families

3325 Wilshire Boulevard Suite 1100

Los Angeles, CA 90010

Office Phone: (213) 427-2700

Email: info@pathwaysla.org

Accessible via Santa Clarita Line 757 to Metro B (Line) Red

Volunteers of America Los Angeles

Headstart Programs for Ages 0-5

Website: <https://voala.org/services/children/>

Office Phone: (661) 215-2752 or (818) 612-3801

Email: info@voala.org

Boys and Girls Club

Structured Child Care by Age Groups

Newhall: 24909 Newhall Avenue,

Newhall CA 91321

Office Line: (661) 254-2582

Accessible via Santa Clarita Line 5, 6

Sierra Vista: 19425 Stillmore Street

Canyon Country, CA 91351

Office Line: 251-3593

Accessible via Santa Clarita Line, 5, 6

ACTION Drug Rehabs

Drug Addiction Treatment (Residential, Outpatient, Partial)

22722 Soledad Canyon Road

Santa Clarita, CA 91350

Office Phone: (661) 297-8693

Website: <https://www.actiondrugrehab.com>

National Council on Alcoholism and Drug Abuse

Outpatient Treatment Program with the goal to meet the specific needs of the individual clients. Comprehensive intake assessment to develop a personalized treatment plan.

24460 Lyons Avenue

Santa Clarita, CA 91321

Office Phone: (661) 253-9400

Email: ncadd@ncadd-sfv.org

Accessible via Santa Clarita Transit Line 14, 4

A Light of Hope

Support Groups for youth and young adults in recovery from addiction or self-destructive behaviors.

21176 Centre Point Parkway, Unit 300

Santa Clarita, CA 91350

Office Phone: (661) 513-4325

Website: <https://www.alightofhopescv.org/>

Accessible via Santa Clarita Transit Line 5, 6

Common Bond Rehab

Intensive outpatient treatment for substance abuse and mental health.

24456 Lyons Avenue

Santa Clarita, CA 91321

Office Phone: (661) 678-0575

Website: <https://commonbondrehabcenter.com/>

Accessible via Santa Clarita Transit Line Line 14,4

Alcoholics Anonymous - Phone: (661) 250-9922

Narcotics Anonymous - Phone: (800) 437-8422

National Drug/Alcohol Abuse Hotline - Phone: (877) 437-8422

Students

College of the Canyons

Resources for Individual Success in Education. Basic needs services available for homeless and low-income students.

26455 Rockwell Canyon Road Student Center (123)
Valencia, CA 91355
Website: canyons.edu/student-services/rise
Office Phone: (661) 362-3273

The Basic Needs Center - BaNC

26455 Rockwell Canyon Road
Valencia, CA 91355
Website: canyons.edu/student-services/banc
Email: Brenda.clarke@canyons.edu
Accessible via Santa Clarita Transit Line 14, 4

School on Wheels

Free Tutoring for Qualifying Students in K-12. See the website for an application.
Website: schoolonwheels.org
Email: lfrias@schoolonwheels.org
Office Phone: (213) 344-9748

Drug Free Youth in Santa Clarita Valley

Anti-Drug Programs for Junior High and High School Students
20880 Centre Pointe Parkway
Santa Clarita, CA 91350
Office Phone: (661) 250-3778
Accessible via Santa Clarita Transit 5, 6

TEEN LINE

Emotional Support for Youth
Call: (310) 855-HOPE
Text: "TEEN" to 839863
Office Phone: (661) 250-3778
Online Message Board: teenlineonline.org/board

California Youth Crisis Line

Emotional Support for Youth
Call: (800) 843-5200

Children and Families

Child Care Resource Center

State and Federally Funded Child Development Services
20001 Prairie Street
Chatsworth, CA 91311
Office Phone: (818) 717-1000
Accessible via Antelope Valley Line to Metro 734 to 243

250 Grand Cypress Avenue

Palmdale, CA 93551

Office Phone: (661) 789-1200

Accessible via Antelope Valley Line to Palmdale Transportation Center Route 1 North

Pathways Los Angeles

Child Care for Low-Income Families

3325 Wilshire Boulevard Suite 1100

Los Angeles, CA 90010

Office Phone: (213) 427-2700

Email: info@pathwaysla.org

Accessible via Santa Clarita Line 757 to Metro B (Line) Red

Volunteers of America Los Angeles

Headstart Programs for Ages 0-5

Website: <https://voala.org/services/children/>

Office Phone: (661) 215-2752 or (818) 612-3801

Email: info@voala.org

Boys and Girls Club

Structured Child Care by Age Groups

Newhall: 24909 Newhall Avenue

Newhall CA 91321

Office Line: (661) 254-2582

Accessible via Santa Clarita Line 5, 6

Sierra Vista: 19425 Stillmore Street

Canyon Country, CA 91351

Office Line: 251-3593

Accessible via Santa Clarita Line, 5, 6

College of the Canyons School of Professional Learning

Free Personal and Professional Learning Classes

26455 Rockwell Canyon Road,

Santa Clarita, CA 91355

Email: freeclasses@canyons.edu

Office Phone: (661) 362-3304

Website: <https://www.canyons.edu/student-services/index.php>

Accessible via Santa Clarita Line 4

Santa Clarita Worksource Center

Employment and Business Services

20730 Soledad Street,

Santa Clarita, CA 91351

Office Phone: (661) 568-8353

Accessible via Santa Clarita Santa Clarita 5, 6

Henry Mayo Hospital Community Education

Health, Fitness, and Financial Courses

23845 McBean Parkway,

Valencia, CA 91355

Office Phone: (661) 200-2000

Website: <https://www.henrymayo.com/classes-events/>

Accessible via Santa Clarita Santa Clarita 5, 6, 797

California Rehabilitation Department

Vocational Training for Disabled Clients

23838 Valencia Boulevard Suite 303

Santa Clarita, CA 91355

Email: jean.vasquez@dor.ca.gov

Office Phone: (661) 388-8559

Website: <https://dor.ca.gov/Home/IAmInterestedIn>

Accessible via Santa Clarita Line 12

The Church of Jesus Christ of Latter-Day Saints

Self-Reliance Education: Job Search, Personal Finances, etc.

Email: stratton1979@sbcglobal.net

Phone: (661) 568-8353

Website: <https://www.churchofjesuschrist.org/self-reliance/manuals-and-videos?lang=eng>

Transportation



Go! Santa Clarita

Affordable On-Demand Transit Service offering \$2.00 rides

Download "TripShot" in the Apple Store or Google Play, to set up your account and set your destination

Utility Bill Assistance

Low Income Home Energy Assistance Program (LIHEAP)

Need Based Utility Assistance

Annual need-based amount and applicants can reapply every year.

Maravilla Foundation, 5729 East Union Avenue

Commerce, CA 90022

Office Phone: (323) 721-4162

Weatherization Services: (323) 869-4600, (323) 869-4623

SoCal Edison CARE/FERA Program

Reduced Energy Bills

Website: <https://www.sce.com/residential/assistance/care-fera>

Office Phone: 1-800-447-6620

SoCalGas

Reduced Energy Bills

Website: <https://www.socalgas.com/save-money-and-energy/assistance->

Legal and Tax Preparation Services

Family Justice Center

Public-Private partnership that links agencies responsible for responding to child abuse, domestic violence, and sexual violence.

14651 Oxnard Street

Van Nuys, CA 91411

Office Phone: (818) 886-0453 or (661) 253-0258

Accessible via Santa Clarita Transit 757 to Metro 154

VITA - Volunteer Income Tax Assistance

IRS Program to assist tax payers earning less than \$57,000/year

Virtual Help: fremontvita.org

Office Phone: (818) 714-0073

Email: jyee_vita@yahoo.com

Samuel Dixon Family Health Center

Primary Care Services— No Insurance Welcomed
Website: <http://www.sdfhc.org/>

Canyon Country Health Center
27225 Camp Plenty Road, Suite 4
Canyon Country, CA 91351
Office Phone: (661) 424-1220

Accessible via Santa Clarita Transit Line 12, 5, 6

Valencia Mental Health Center
25115 Avenue Stanford #B225
Valencia, CA 91355
Office Phone: ((661) 468-7405

Accessible via Santa Clarita Transit Line 1, 2

Assistance League Santa Clarita

Vision Screening for Students
Website: <https://assistanceleaguesantaclarita.org/>

24364 Main Street,
Newhall, CA 91321
Office Phone: (661) 255-1991

Accessible via Santa Clarita Transit Line 5, 6, 12

Child and Family Center

Mental Health Counseling (Ages 0-25), Substance Abuse
Website: <https://www.childfamilycenter.org>

21545 Centre Pointe Parkway
Santa Clarita, CA 91350
Office Phone: (661) 259-9439

Accessible via Santa Clarita Transit Line 5, 6

Henry Mayo Hospital Behavioral Health Unit

Mental Health Treatments
Website: <https://www.henrymayo.com/our-services/behavioral-health-unit/>

22385 McBean Parkway
Valencia, CA 91355
Office Phone: (661) 200-1080

Accessible via Santa Clarita Transit Line 5,6

Santa Clarita Grocery

Weekly Groceries and Personal Care Items
Website: <http://santaclaritagrocery.org/>
21176 Centre Pointe Parkway Suite 300
Santa Clarita, CA 91350

Drive up-Drive Thru Style Distribution

Santa Clarita Food Pantry

Short-Term Supplemental Food Distribution
24133 Railroad Avenue
Newhall, CA 91321
Office Phone: (661) 255-5001

Accessible via Santa Clarita Transit Line 12, 5, 6

Salvation Army SCV Corps

Food Pantry
Website: www.santaclarita.salvationarmy.org
22935 Lyons Avenue
Newhall, CA 91321
Office Phone: (661) 799-5841

Accessible via Santa Clarita Transit Line 14. 4

feedSCV

Meal Preparation Education, Meal Provisions
Website: feedscv.org
24881 Railroad Avenue Suite 103
Newhall, CA 91321
Office Phone: (661) 977-5027

Accessible via Santa Clarita Transit Line 12

Jesus Loves You International

Grocery Provisions
31910 Castaic Road
Castaic, CA 91384
Office Phone: (661) 607-1171

Accessible via Santa Clarita Transit Line 1

CalFresh (California Department of Social Services)

Website: <https://www.cdss.ca.gov/calfresh>

Information Line: 1 (877) 847-3663

Bridge to Home

Sheltering Case Management Services, and Housing Opportunities for homeless individuals

23752 Newhall Avenue
Santa Clarita, CA 91321
Office Phone: (661) 254-4663
Website: <https://btohome.org/>

Accessible via Santa Clarita Transit Line 12

Family Promise of Santa Clarita Valley

Transitional Housing and Case Management Services for Homeless Families and pregnant women. Sheltered within Christian and Jewish Congregations for periods of 30-90 days.

24820 Orchard Village Road, Suite A #391
Santa Clarita, CA 91355
Office Phone: (661) 251-2868
Email: contact@familypromisescv.org
Website: <https://www.familypromisescv.org/>

Los Angeles Family Housing

Housing Navigation, Case Management

Family: 7817 Lankershim Blvd, North Hollywood
Individual: 7843 Lankershim Blvd, North Hollywood

Accessible via Santa Clarita Transit 757 to Metro 224

Referrals: referrals@lafh.org or (818) 255-2766

The Village Family Services

Transitional Age Homeless Youth Services including meals, showers, hygiene kits, clothing, laundry vouchers, TAP Cards, and food vouchers.

6801 Coldwater Canyon Avenue
North Hollywood, CA 91605
Phone: (818) 738-7327
Website: thevillagefs.org

Walk-Ins:

Accessible via Santa Clarita Transit 757 to Metro 162 to Metro 165



Northeast Valley Health Corporation

Primary Healthcare for the medically underserved residents of the Santa Clarita Valley

Website: <https://nevhc.org/>

Valencia Health Center
23763 Valencia Blvd
Valencia, CA 91355
Office Phone: (661) 287-1551

Accessible via Santa Clarita Transit Line 757

Newhall Health Center
23413 Lyons Ave
Santa Clarita, CA 91355
Office Phone: (661) 593-7500

Accessible via Santa Clarita Transit Line 4,5,6,14

Santa Clarita Health Center
18533 Soledad Canyon Road
Santa Clarita, CA 91355
Office Phone: (661) 673-8800

Accessible via Santa Clarita Transit Line 12

Samuel Dixon Family Health Center

Primary Health/Dental Care and non-emergency services. Bilingual staff. No insurance needed.

Website: <http://www.sdfhc.org/>

Newhall Health Center
23772 Newhall Avenue
Newhall, CA 91321
Office Phone: (661) 291-1777

Accessible via Santa Clarita Transit Line 757, 12

Val Verde Health Center
30257 San Martinez Road
Val Verde, CA 91384
Office Phone: (661) 257-4008

Accessible via Santa Clarita Transit Line 2